

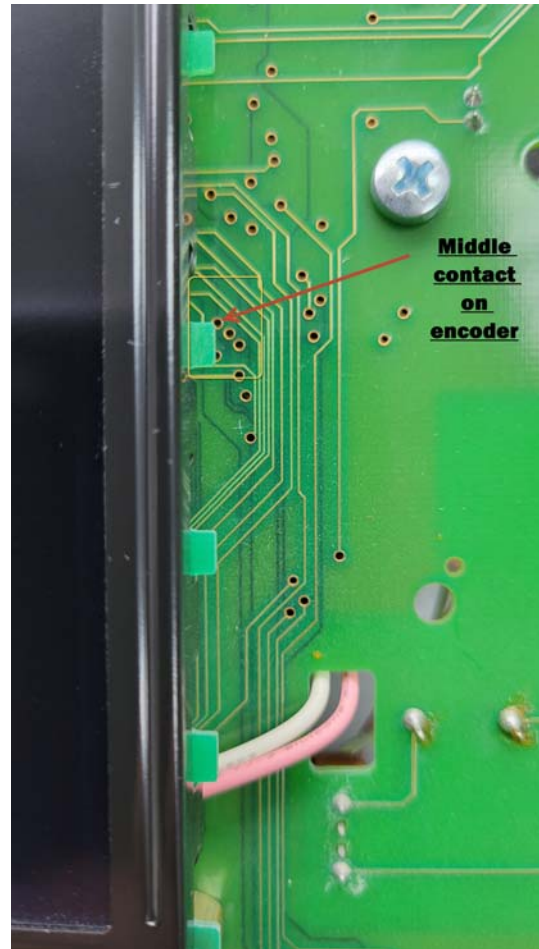
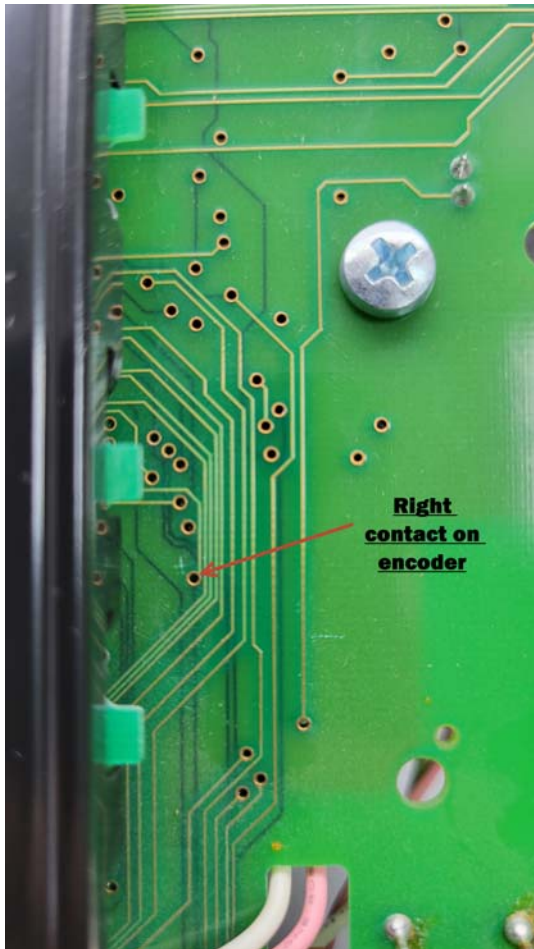
*Installing an encoder and it still will not work ?
Try these tips to keep from replacing the display control PCB!*



This is the location of the two traces that feed to the encoder. Pass thru solder points.

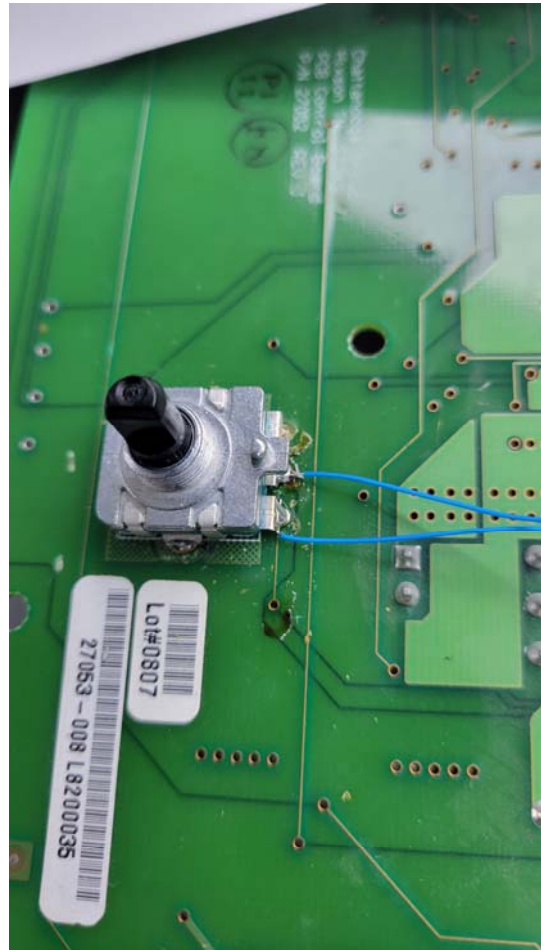
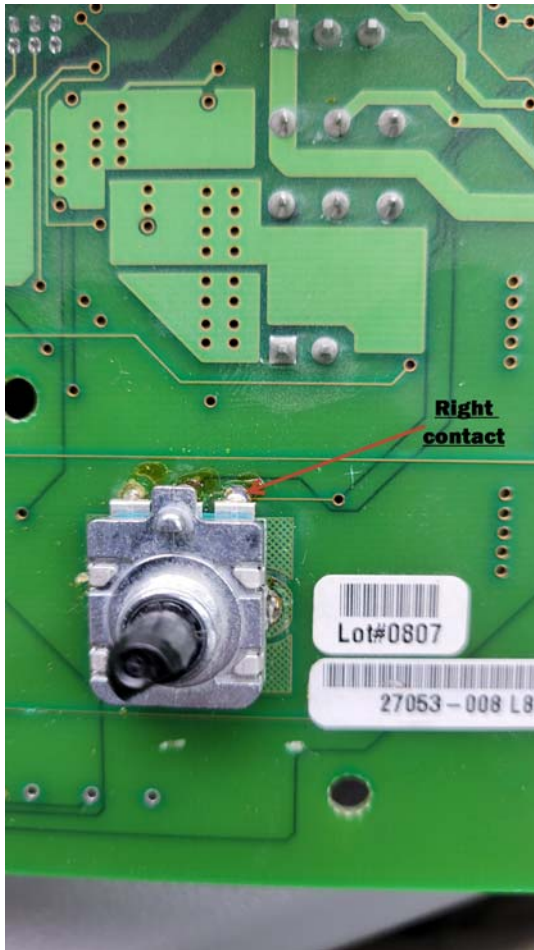


Find the two locations on the PCB and mark them.



This is the location of the two traces that feed to the encoder. Pass thru solder points

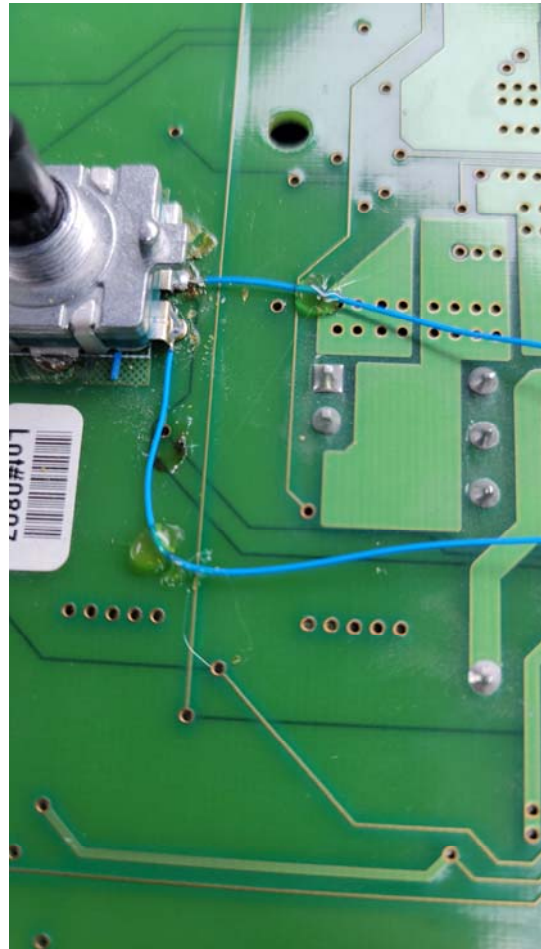
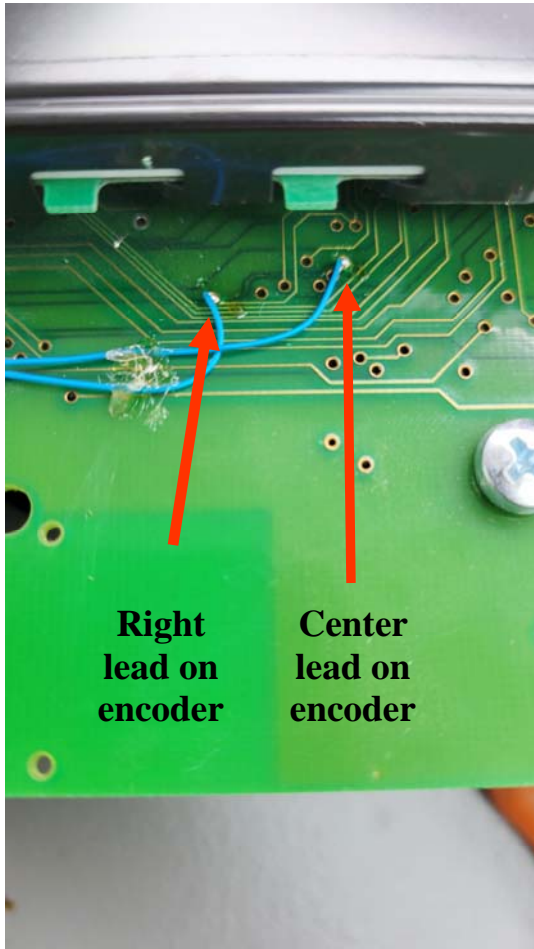
Use a meter to double check if one or both of the connection traces are open, this can happen when your iron is hotter than 680 deg. It opens/lifts the trace, internally as well.



**Solder a piece of wire wrap wire to
To the center and outer (right) connection**



Solder your wires to the thru holes and tack them down.



The unit should work just fine!

