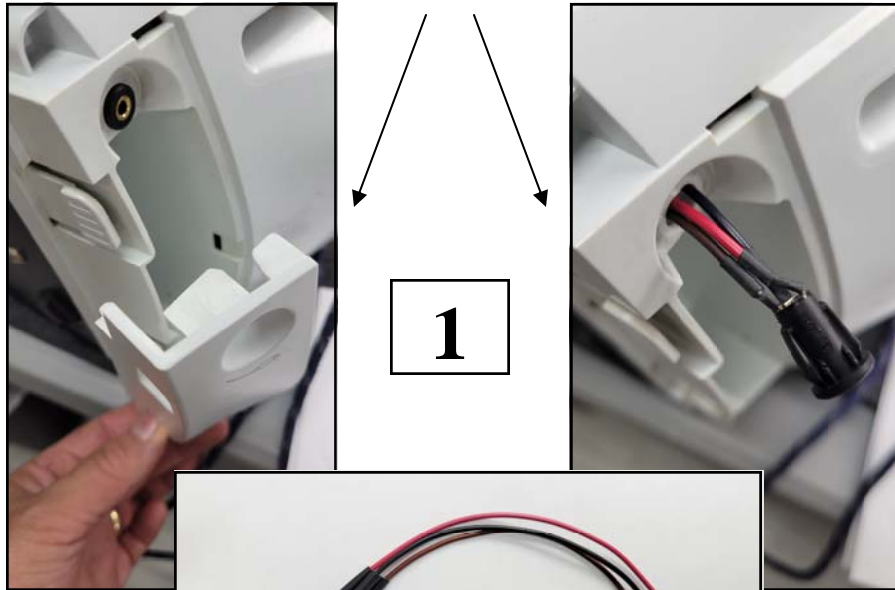


48040 Patient Switch socket replacement

Start by removing side panel (three screws on the bottom of unit, right side only)
Then remove the front bezel, then wiggle (push) out the old socket.



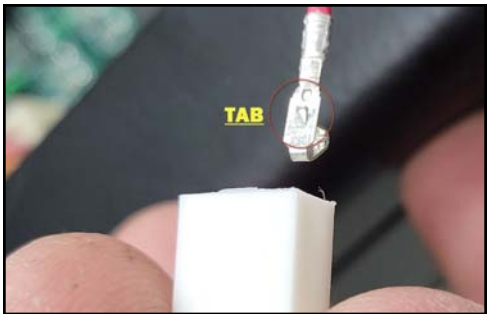
1

2



Insert the wires into the existing hole and push the socket into place.

3



Note the tab on the connector, must be fed into the connector in the proper direction to lock in the connector.

4



End result, once complete,
connect to the PCB.
Note the color configuration!